



MONTHLY MEMBERSHIP PROGRESS REPORT

District 201Q2

Results as of: 05/31/2018

GMT: ANN ELDRIDGE

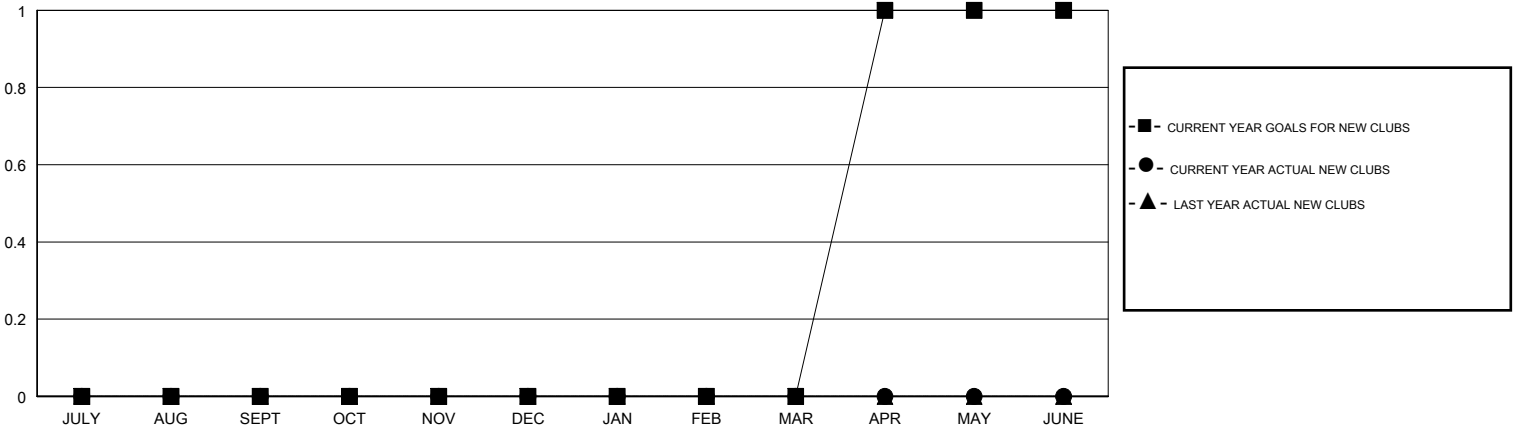
LOCATION AUSTRALIA

GMT CA

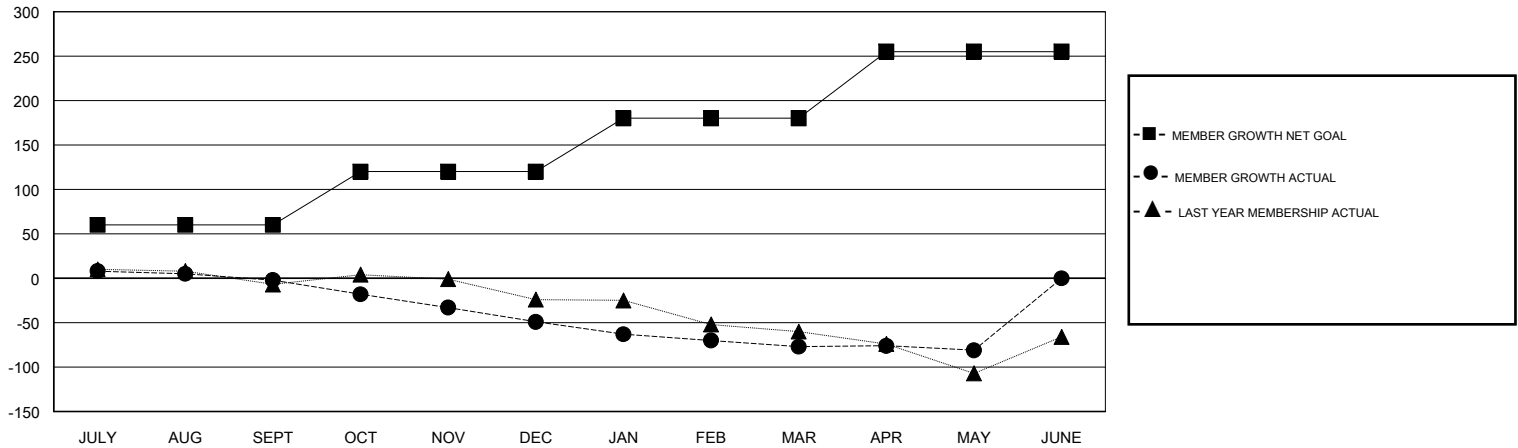
Clubs			
RESULTS FOR 2017-2018			
QUARTER	NEW CLUB GOAL	NEW CLUBS	DROPPED CLUBS
JULY/AUG/SEPT	0	0	0
OCT/NOV/DEC	0	0	1
JAN/FEB/MAR	0	0	3
APR/MAY/JUNE	1	0	0

Members			
RESULTS FOR 2017-2018			
QUARTER	MEMBER GROWTH NET GOAL	MEMBER GROWTH ACTUAL	DROPPED MEMBERS ACTUAL (including transfers)
JULY/AUG/SEPT	60	33	31
OCT/NOV/DEC	60	21	62
JAN/FEB/MAR	60	30	55
APR/MAY/JUNE	75	42	41

GOALS AND ACTUAL NEW CLUBS CUMULATIVE



GOALS AND ACTUAL MEMBERS CUMULATIVE



DROPPED CLUBS: 4	34 CLUBS OF 66 ADDED 1 OR MORE NEW MEMBERS	<u>GENDER DISTRIBUTION</u>	
		MALE	706 (62.04%)
		FEMALE	432 (37.96%)
		Women Percentage Fiscal Year Goal: 40%	
<u>DROPPED MEMBERS</u>		TOTAL FAMILY UNIT MEMBERS	175
DECEASED	15	FAMILY MEMBERS PAYING HALF DUES	89
CLUB CANCELLED	6		
OTHER	168		
TOTAL	189		

[CLICK HERE FOR CUMULATIVE MEMBERSHIP DATA](#)